



## The Willow

A stunning new  
one-bedroom apartment  
with a private balcony

57.8 sqm / 622 sqft

MOUNT  
BATTENHALL

LIVE WITH *Freedom*

Visit

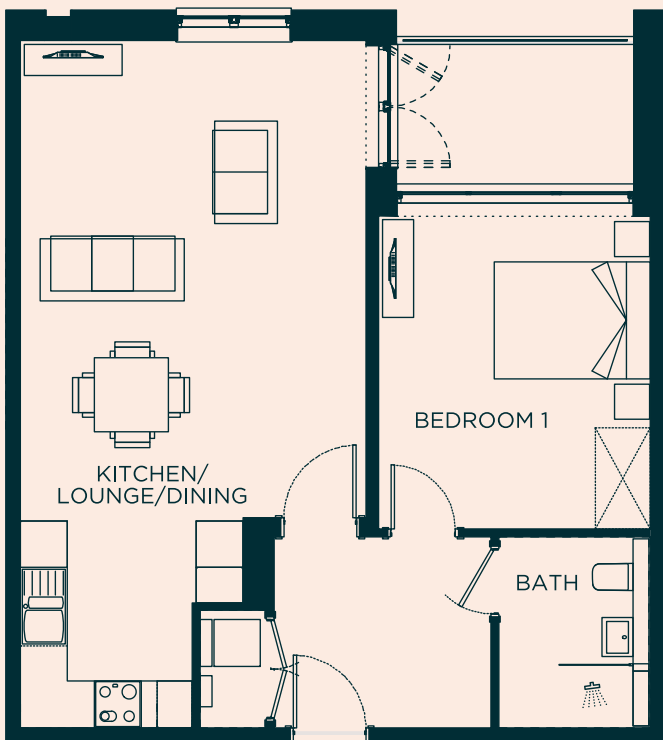
[MountBattenhall.co.uk](https://MountBattenhall.co.uk)

# The Willow

A beautiful brand new one-bedroom apartment that's the perfect place to call home. Located on the first and second floors of Astley Villa, just a short walk away from all the communal facilities.

This bright and airy apartment boasts a spacious double bedroom with floor-to-ceiling windows, offering plenty of natural light. The modern shower room features a walk-in shower for added convenience and the open-plan kitchen, dining, and living room is designed for contemporary living, with French doors that open onto a private balcony – ideal for enjoying outdoor space.

Additional features include a handy utility cupboard, making this apartment as practical as it is stylish.



This property type is handed, and the floorplan and dimensions below are intended to be indicative only

Approx Gross Internal Area:  
57.8 sqm / 622 sqft

Energy Performance Certificate Rating: B

Lounge/Diner 6.0m x 4.4m 19'8" x 14'5"

Kitchen 2.7m x 2.2m 8'9" x 7'2"

Bedroom 4.0m x 3.4m 13'1" x 11'2"

Bathroom 2.4m x 1.9m 7'10" x 6'2"



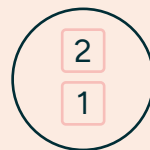
Apartment



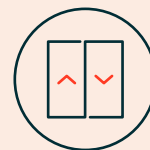
New build



1 bedroom



Available on floors  
1 and 2



Lifts to all  
floors



# Property specification

## Kitchen

- Single Neff oven
- 4 ring ceramic hob
- Integrated Cooker hood
- Integrated Neff microwave
- Integrated dishwasher
- Integrated 70 / 30 fridge/ freezer
- 20mm Silestone worktop with under mount single bowl stainless steel sink
- Glass splashback
- Luxury vinyl tile flooring

## Utility cupboard

- Freestanding washer/dryer

## Shower room

- Walk in wet-room shower
- 'Bristan' concealed 2-way chrome rain shower and handheld shower

- ROCA wall-hung concealed toilet with soft-close seat
- Wash basin vanity unit drawer with mirrored recess or mirrored cabinet over
- Chrome heated towel rail
- Underfloor heating
- Ceramic flooring & full-height ceramic tiling

## Internal finishes

- Wool carpet to living/ dining room, hall, and bedrooms

## Electrical

- Telephone point to living room, hall, and bedroom
- TV point to living room and bedroom
- Mains operated smoke & heat detectors

- Tunstall red pull cord to bathroom and ensuite
- Shaver socket to bathroom and ensuite
- PIR sensor to hallway
- Tunstall video door entry intercom system

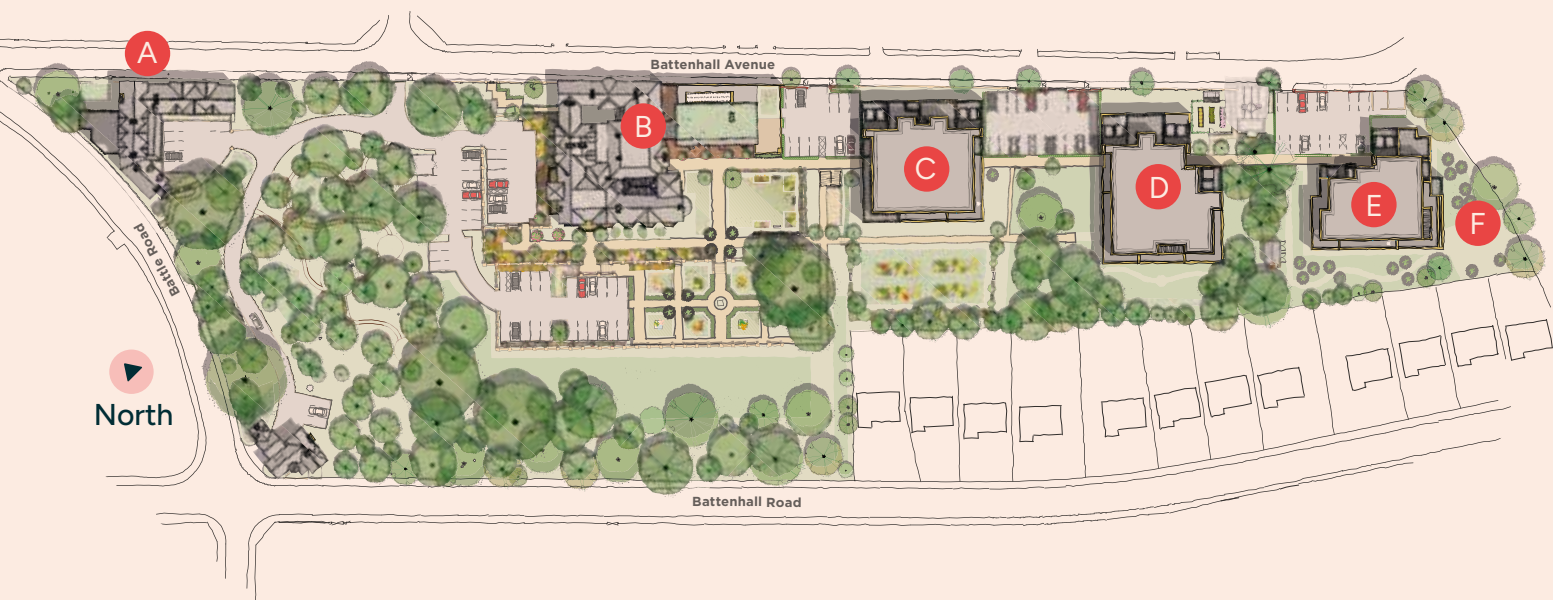
## Heating

- Renewable district heating system providing instant hot water and heating
- Programmable room thermostats and hot water timers

# Exceptional, premium quality new homes



- A The Stables
- B Battenhall House
- C Astley Villa
- D Beckford
- E Chaddesley
- F Raised flowerbeds



Showhomes open Monday to Saturday,  
10am – 4pm

Mount Battenhall, Battenhall Avenue,  
Worcester WR5 2JD

01905 347121  
sales@mountbattenhall.co.uk



APPROVED  
OPERATOR



## MOUNT BATTENHALL

LIVE WITH *Freedom*

Plans are not shown to scale and room dimensions are approximate, given at their maximum, and are indicative of this property type only. They are not intended to be used for carpet sizes, appliance sizes, or items of furniture. Property images are intended to be indicative of this property type only and all properties are sold as unfurnished. Some property images may be digitally staged to show how the apartment would look furnished.

Energy Performance Certificate Rating: B. Full energy performance certificate available on request.  
All information believed to be correct at publication in April 2026.

Enterprise Retirement Living Limited (trading as Freedom Living), Scutches Barn, 17 High Street, Whittlesford, Cambridge CB22 4LT | 01223 494099 | info@freedomvillages.co.uk  
freedomvillages.co.uk | Registered in England & Wales No. 06525067.

[MountBattenhall.co.uk](http://MountBattenhall.co.uk)