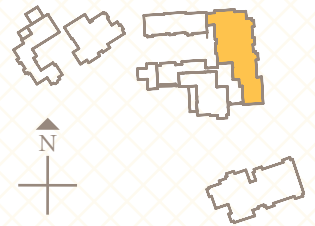
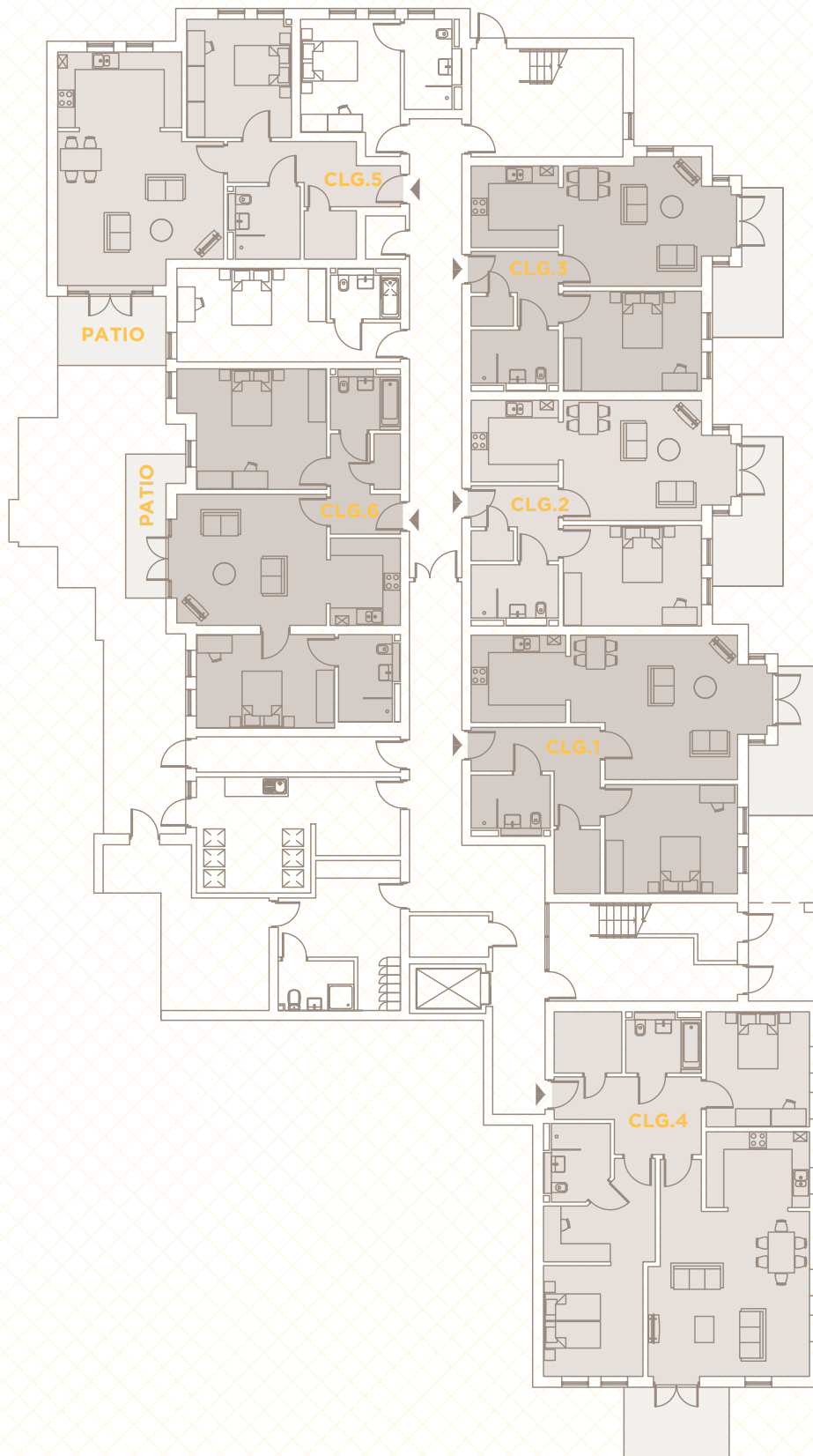


# ROSEDALE LOWER GROUND FLOOR

ENTERPRISE  
RETIREMENT  
LIVING

THE  
RED HOUSE



Plans are not shown to scale and room dimensions are approximate, given at their maximum and are indicative only. They are not intended to be used for carpet sizes, appliance sizes or items of furniture. Furniture not included.

# ROSEDALE CLG.1

Total Area - 78.1m<sup>2</sup> / 840ft<sup>2</sup>

## Lounge / Dining

6.80m x 5.28m / 22'4" x 17'4"

## Kitchen

3.20m x 2.80m / 10'6" x 9'2"

## Bedroom

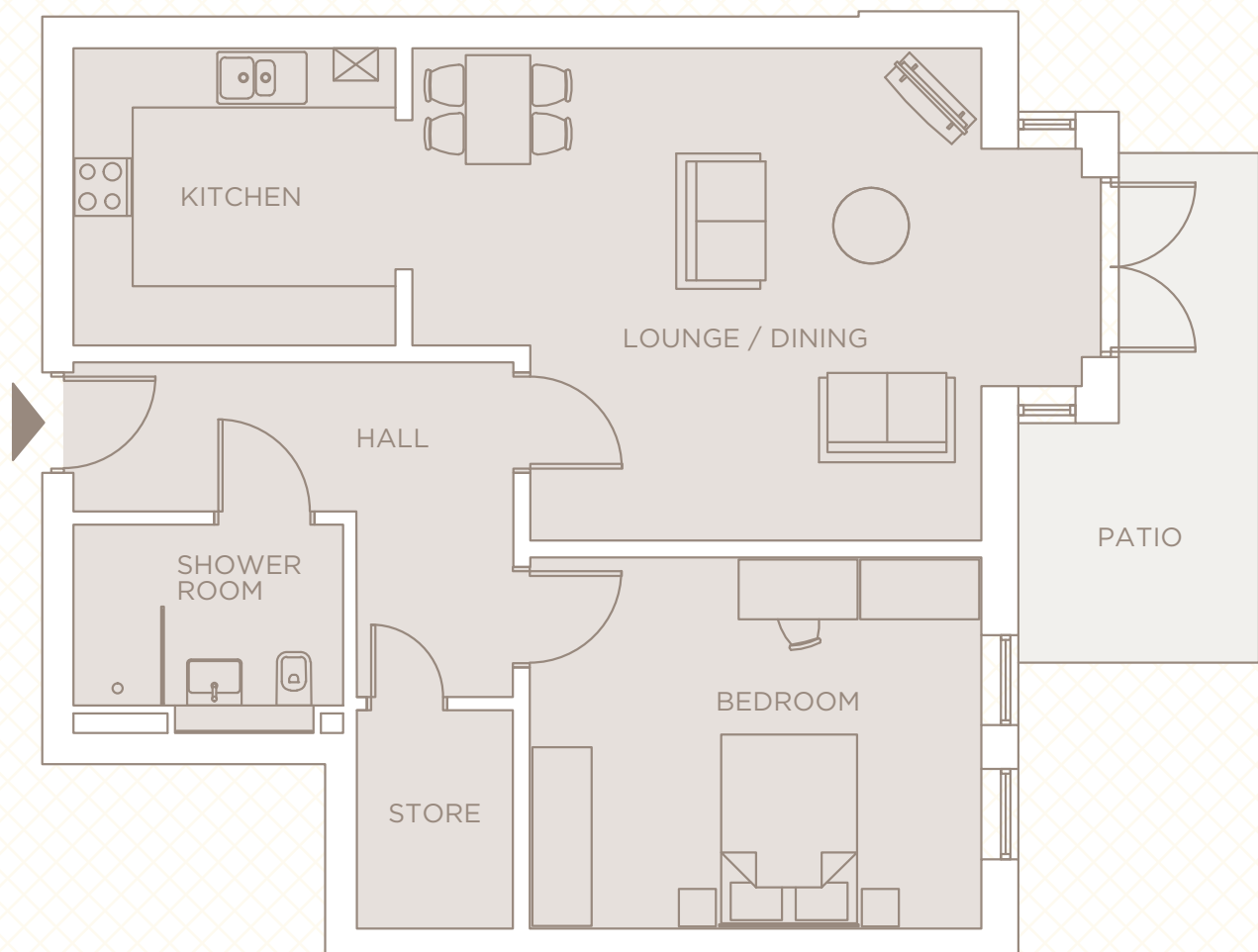
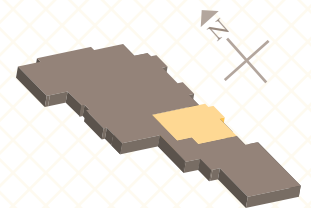
4.55m x 3.74m / 14'11" x 12'3"

## Shower Room

2.72m x 1.83m / 8'11" x 6'0"

ENTERPRISE  
RETIREMENT  
LIVING

THE  
RED HOUSE



LOWER GROUND FLOOR

Plans are not shown to scale and room dimensions are approximate, given at their maximum and are indicative only. They are not intended to be used for carpet sizes, appliance sizes or items of furniture. Furniture not included.