



The Mayhill

A stunning new one-bedroom apartment with a private patio or balcony

73.2 sqm / 788sqft

MOUNT
BATTENHALL

LIVE WITH *Freedom*

Visit

MountBattenhall.co.uk

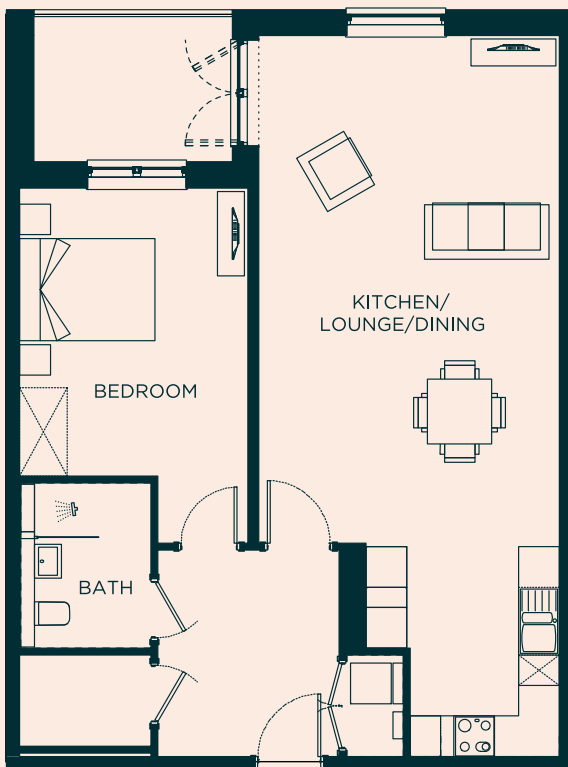
The Mayhill

Presenting The Mayhill, a brand new one-bedroom apartment offering outside space.

Located in Astley Villa, just a short walk from the restaurant, bar, and all the amenities within Battenhall House.

The property boasts an open-plan U-shaped kitchen that seamlessly flows into the living and dining area with a picture window and private balcony – perfect for al-fresco dining. The spacious double bedroom overlooks the balcony, bringing in plenty of natural light.

Additionally, The Mayhill includes a handy utility cupboard and a walk-in storage cupboard off the hallway, ideal for storing items like a buggy. With its thoughtful design and convenient features, The Mayhill is the perfect choice for modern living.



This property type is handed, and the floorplan and dimensions below are intended to be indicative only

Approx Gross Internal Area: 73.2 sqm / 788sqft
Energy Performance Certificate Rating: B

Lounge/Diner 7.5m x 4.4m 24'7" x 14'5"

Kitchen 3.1m x 2.7m 10'2" x 8'10"

Bedroom 5.2m x 3.3m 17'1" x 10'10"

Bathroom 2.4m x 1.9m 7'10" x 6'2"

Large store 1.9m x 1.3m 6'2" x 4'2"



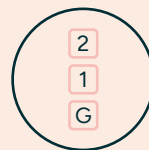
Apartment



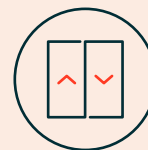
New build



1 bedroom



Available on floors
G, 1 and 2



Lifts to all
floors



Property specification

Kitchen

- Single Neff oven
- 4 ring ceramic hob
- Integrated Cooker hood
- Integrated Neff microwave
- Integrated dishwasher
- Integrated 70 / 30 fridge/ freezer
- 20mm Silestone worktop with under mount single bowl stainless steel sink
- Glass splashback
- Luxury vinyl tile flooring

Utility cupboard

- Freestanding washer/dryer

Shower room

- Walk in wet-room shower
- 'Bristan' concealed 2-way chrome rain shower and handheld shower

- ROCA wall-hung concealed toilet with soft-close seat
- Wash basin vanity unit drawer with mirrored recess or mirrored cabinet over
- Chrome heated towel rail
- Underfloor heating
- Ceramic flooring & full-height ceramic tiling

Internal finishes

- Wool carpet to living/ dining room, hall, and bedrooms

Electrical

- Telephone point to living room, hall, and bedroom
- TV point to living room and bedroom
- Mains operated smoke & heat detectors

- Tunstall red pull cord to bathroom and ensuite
- Shaver socket to bathroom and ensuite
- PIR sensor to hallway
- Tunstall video door entry intercom system

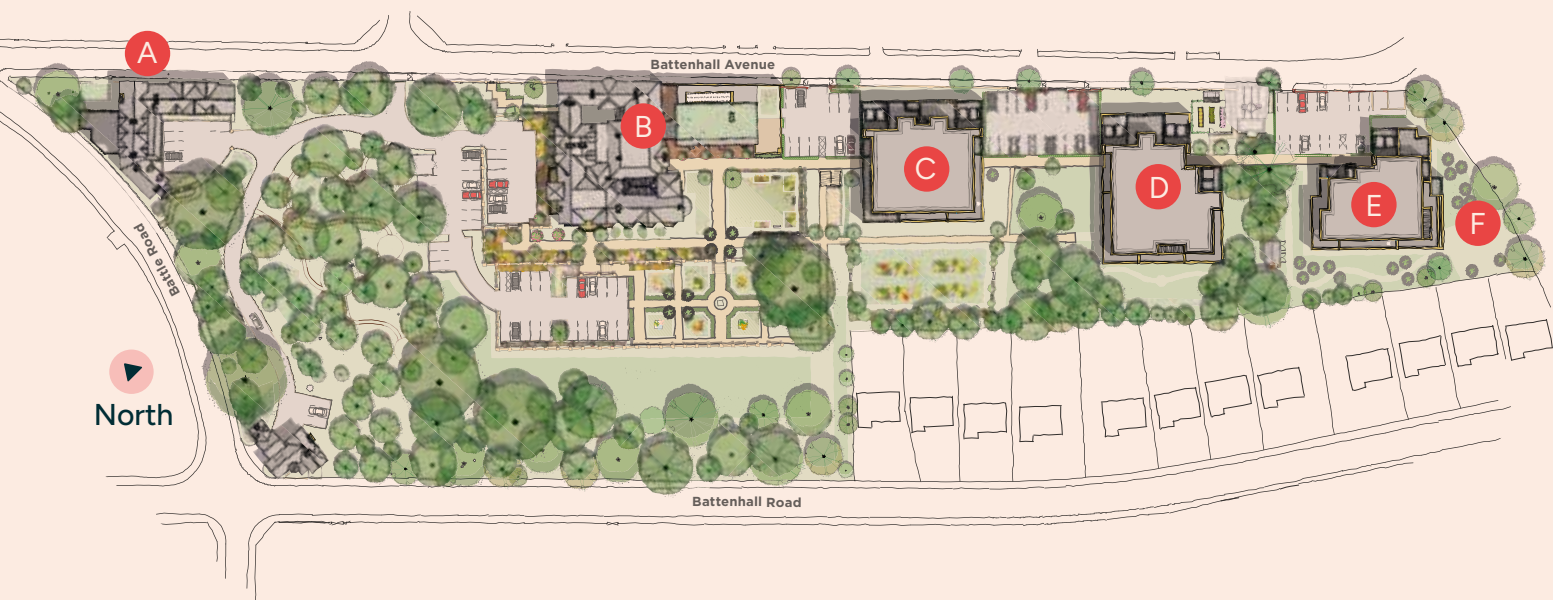
Heating

- Renewable district heating system providing instant hot water and heating
- Programmable room thermostats and hot water timers

Exceptional, premium quality new homes



- A The Stables
- B Battenhall House
- C Astley Villa
- D Beckford
- E Chaddesley
- F Raised flowerbeds



Showhomes open Monday to Saturday,
10am – 4pm

Mount Battenhall, Battenhall Avenue,
Worcester WR5 2JD

01905 347121

sales@mountbattenhall.co.uk



APPROVED
OPERATOR



Plans are not shown to scale and room dimensions are approximate, given at their maximum, and are indicative of this property type only. They are not intended to be used for carpet sizes, appliance sizes, or items of furniture. Property images are intended to be indicative of this property type only and all properties are sold as unfurnished. Some property images may be digitally staged to show how the apartment would look furnished.

Energy Performance Certificate Rating: B. Full energy performance certificate available on request.

All information believed to be correct at publication in April 2026.

Enterprise Retirement Living Limited (trading as Freedom Living), Scutches Barn, 17 High Street, Whittlesford, Cambridge CB22 4LT | 01223 494099 | info@freedomvillages.co.uk | freedomvillages.co.uk | Registered in England & Wales No. 06525067.

MOUNT BATTENHALL

LIVE WITH *Freedom*

MountBattenhall.co.uk