

THE WILLOW

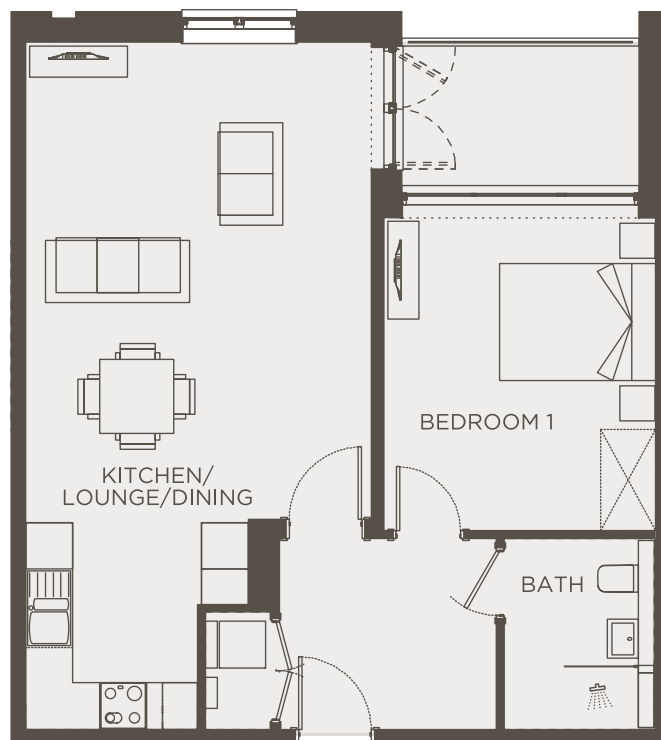
Welcome to The Willow.

A beautiful brand new one-bedroom apartment that's the perfect place to call home. Located on the first and second floors of Astley Villa, just a short walk away from all the communal facilities.

This bright and airy apartment boasts a spacious double bedroom with floor-to-ceiling windows, offering plenty of natural light. The modern shower room features a walk-in shower for added convenience and the open-plan kitchen, dining, and living room is designed for contemporary living, with French doors that open onto a private balcony—ideal for enjoying outdoor space.

Additional features include a handy utility cupboard, making this apartment as practical as it is stylish.

This property type is handed, and the floorplan and dimensions below are intended to be indicative only
Approx Gross Internal Area 58.2 sqm / 626 sqft
Energy Performance Certificate Rating: B



Lounge/Diner	Kitchen	Bedroom	Bathroom
6.0m x 4.4m	2.8m x 2.2m	4.2m x 3.4m	2.4m x 1.9m
19'8" x 14'5"	9'2" x 7'2"	13'8" x 11'2"	7'10" x 6'2"



Apartment



New Build



1 Bedroom



Available on
floors 1 and 2



Lifts to all
floors