

# THE STABLES

## Apartment 1 2 Bedroom, Ground Floor

ENTERPRISE  
RETIREMENT  
LIVING

MOUNT  
BATTENHALL



Located within the charming Stables building with views towards the leafy village entrance, this two double bedroom apartment features a flexible, open-plan kitchen/lounge/dining space that is ideal for entertaining. The master bedroom benefits from a bright private ensuite.

- Grade II Listed with high ceilings and many restored original features
- Hatt high gloss handleless and soft-close kitchen cabinets
- Integrated appliances
- Oven and microwave
- Electric hob
- Luxury sanitaryware
- Anti-slip porcelain floor tiles with underfloor heating to wet areas

**Mount Battenhall, Battenhall Avenue, Worcester WR5 2JF**

01905 347121 | [sales@mountbattenhall.co.uk](mailto:sales@mountbattenhall.co.uk) | [mountbattenhall.co.uk](http://mountbattenhall.co.uk)

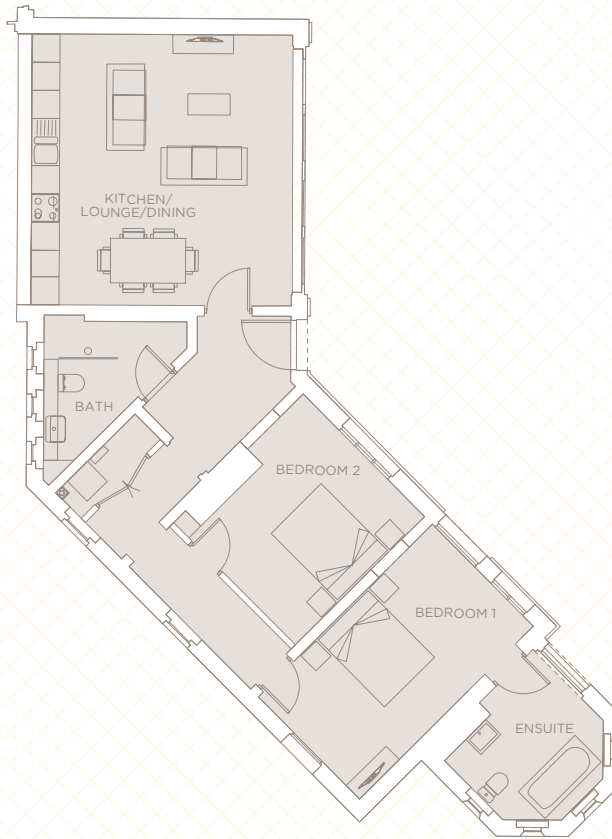
# THE STABLES

## Apartment 1 2 Bedroom, Ground Floor



ENTERPRISE  
RETIREMENT  
LIVING

MOUNT  
BATTENHALL



Kitchen/lounge/dining	5.7m x 5.5m	18'8" x 18'
Bedroom 1	5.2m x 3m	17'1" x 9'10"
Ensuite	3m x 3m	9'10" x 9'10"
Bedroom 2	3.9m x 3.6m	12'9" x 11'10"
Bathroom	3.6m x 3m	11'10" x 9'10"
<b>Approx gross internal area</b>	<b>93.9 m<sup>2</sup></b>	<b>1,011 ft<sup>2</sup></b>

**Mount Battenhall, Battenhall Avenue, Worcester WR5 2JF**

01905 347121 | [sales@mountbattenhall.co.uk](mailto:sales@mountbattenhall.co.uk) | [mountbattenhall.co.uk](http://mountbattenhall.co.uk)

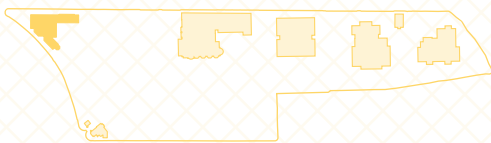
Plans are not shown to scale and room dimensions are approximate, given at their maximum and are indicative only. They are not intended to be used for carpet sizes, appliance sizes or items of furniture. Furniture not included.

# THE STABLES

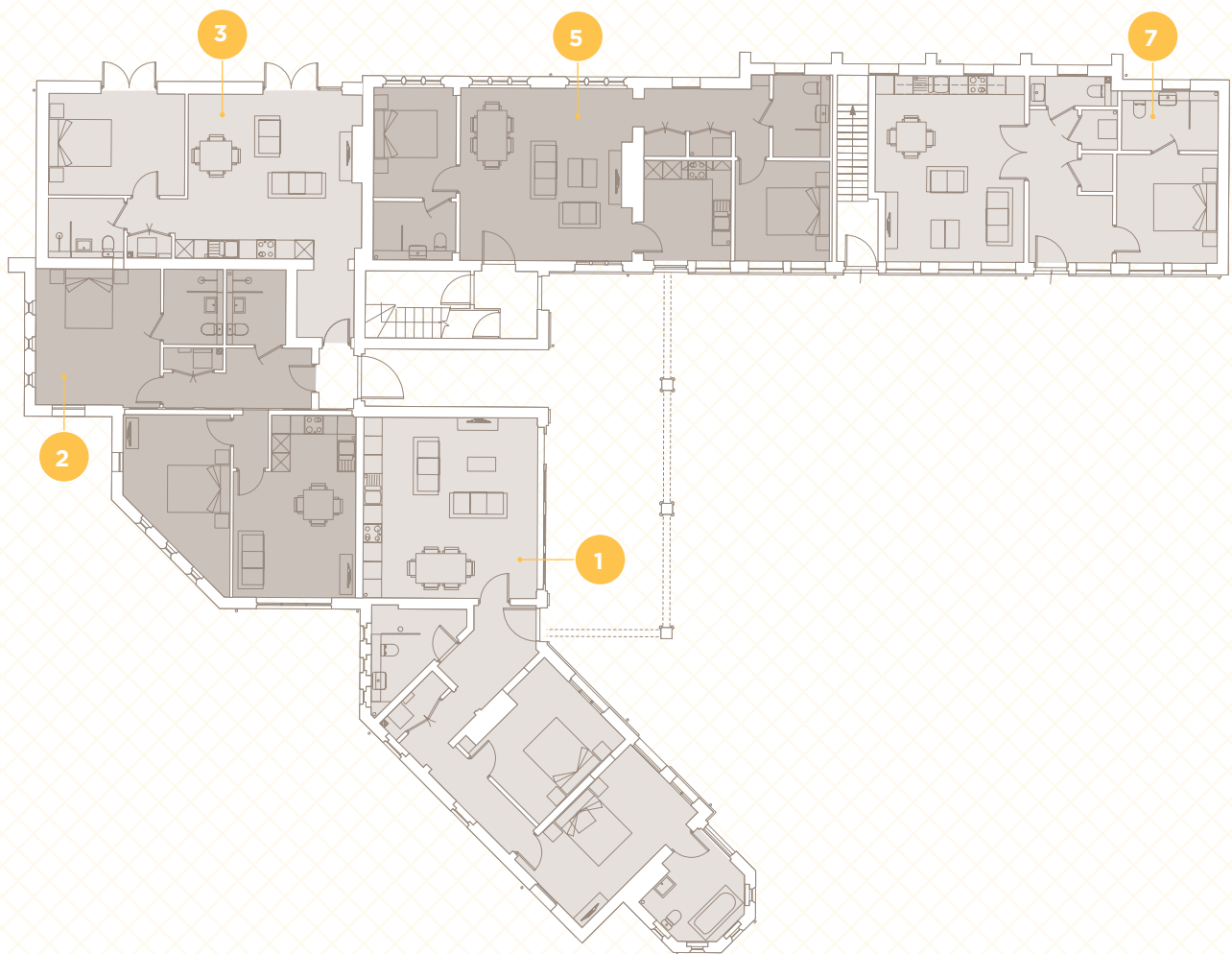
## Ground Floor

ENTERPRISE  
RETIREMENT  
LIVING

MOUNT  
BATTENHALL



North



**Mount Battenhall, Battenhall Avenue, Worcester WR5 2JF**

01905 347121 | [sales@mountbattenhall.co.uk](mailto:sales@mountbattenhall.co.uk) | [mountbattenhall.co.uk](http://mountbattenhall.co.uk)

Plans are not shown to scale and room dimensions are approximate, given at their maximum and are indicative only. They are not intended to be used for carpet sizes, appliance sizes or items of furniture. Furniture not included.

# SITE PLAN

ENTERPRISE  
RETIREMENT  
LIVING

MOUNT  
BATTENHALL

