

## 5 ASTLEY

### 1 Bedroom, Ground Floor Apartment

ENTERPRISE  
RETIREMENT  
LIVING

MOUNT  
BATTENHALL



This contemporary apartment features a generous, open plan kitchen/lounge/dining area, ideal for flexible living and entertaining.

Double doors provide access from the living space onto the private south-west facing terrace, with views of the landscaped gardens.

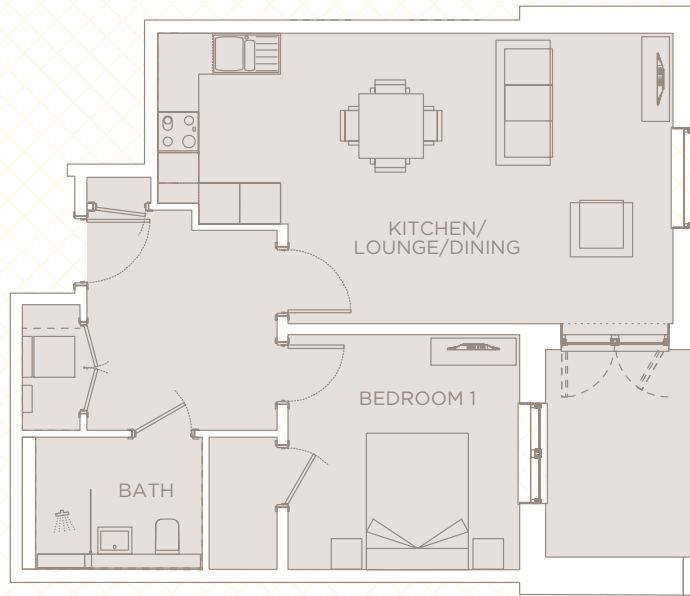
- Hatt high gloss handleless and soft close kitchens
- Integrated appliances
- Oven and microwave
- Electric hob
- Luxury sanitaryware
- Anti-slip porcelain floor tiles with underfloor heating to wet areas

**Mount Battenhall, Battenhall Avenue, Worcester WR5 2JH**

01905 347121 | [sales@mountbattenhall.co.uk](mailto:sales@mountbattenhall.co.uk) | [mountbattenhall.co.uk](http://mountbattenhall.co.uk)

# 5 ASTLEY

## 1 Bedroom, Ground Floor Apartment



Lounge, diner	5.5m x 4.2m	18'0" x 13'9"
Kitchen	2.8m x 1.8m	9'2" x 5'10"
Bedroom	3.4m x 3.3m	11'2" x 10'8"
Walk-in wardrobe	1.9m x 1m	6'2" x 3'4"
Bathroom	2.4m x 1.9m	7'10" x 6'2"
<b>Approx gross internal area</b>	<b>60 m<sup>2</sup></b>	<b>646 ft<sup>2</sup></b>

Mount Battenhall, Battenhall Avenue, Worcester WR5 2JH

01905 347121 | sales@mountbattenhall.co.uk | mountbattenhall.co.uk

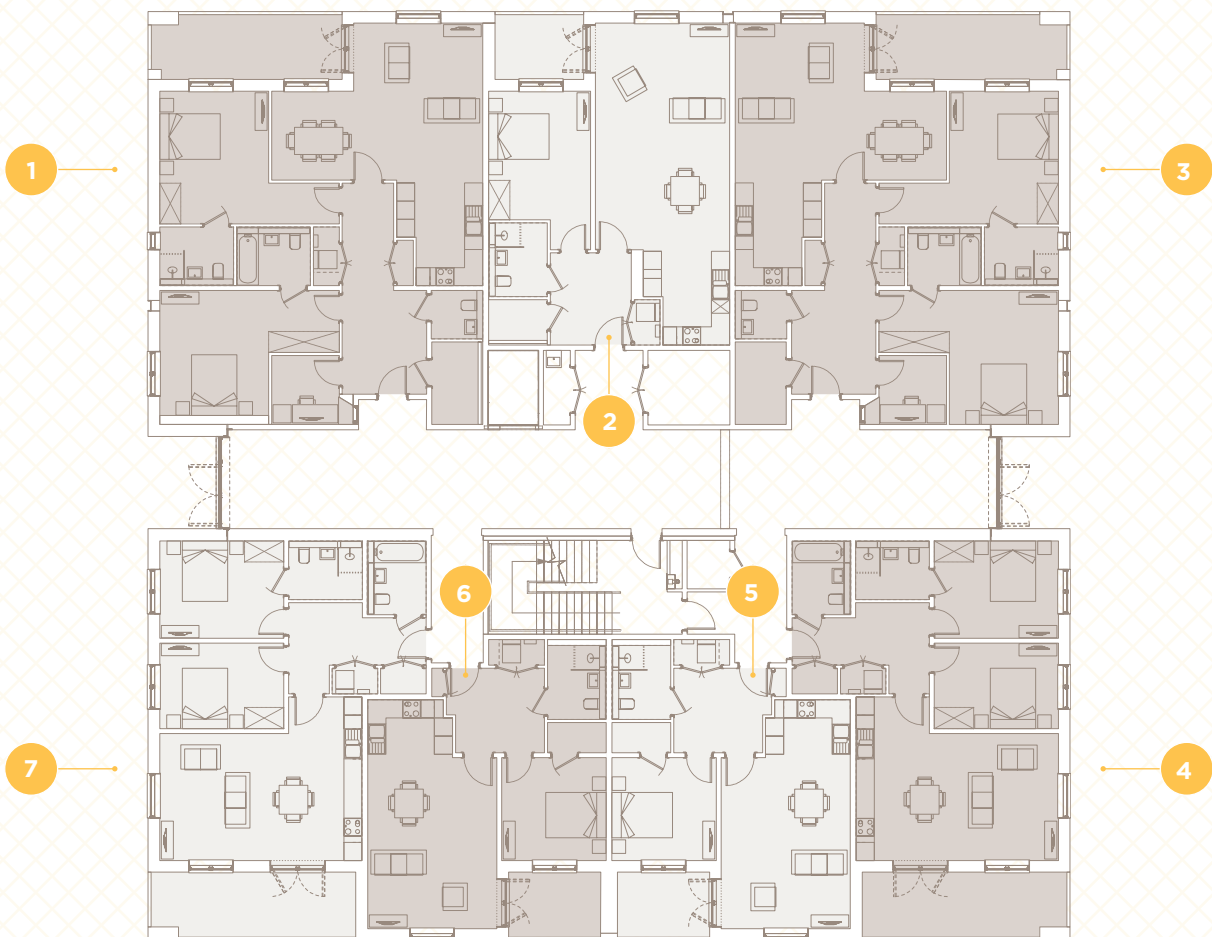
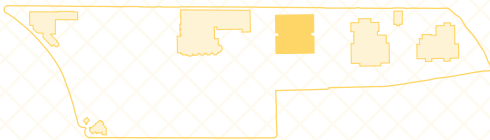
Plans are not shown to scale and room dimensions are approximate, given at their maximum and are indicative only. They are not intended to be used for carpet sizes, appliance sizes or items of furniture. Furniture not included.

# ASTLEY

## Ground Floor

ENTERPRISE  
RETIREMENT  
LIVING

MOUNT  
BATTENHALL



**Mount Battenhall, Battenhall Avenue, Worcester WR5 2JH**

01905 347121 | [sales@mountbattenhall.co.uk](mailto:sales@mountbattenhall.co.uk) | [mountbattenhall.co.uk](http://mountbattenhall.co.uk)

Plans are not shown to scale and room dimensions are approximate, given at their maximum and are indicative only. They are not intended to be used for carpet sizes, appliance sizes or items of furniture. Furniture not included.

# SITE PLAN

ENTERPRISE  
RETIREMENT  
LIVING

MOUNT  
BATTENHALL

