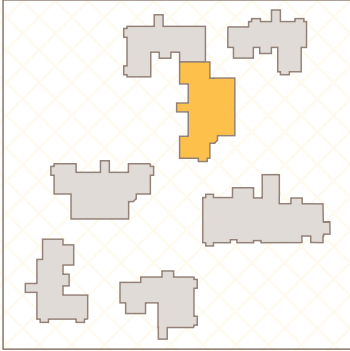


# TATTON

## Ground floor

ENTERPRISE  
RETIREMENT  
LIVING

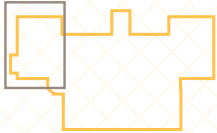
BOUGHTON  
HALL



Whilst we try to be as accurate as possible, room dimensions are maximum and indicative. Layouts are not shown to scale and have been 'handed' in some cases for illustration purposes. Note: All ground floor apartments have patio doors. Plans include indicative furniture layouts and for the avoidance of doubt such furniture is not included within the specification.

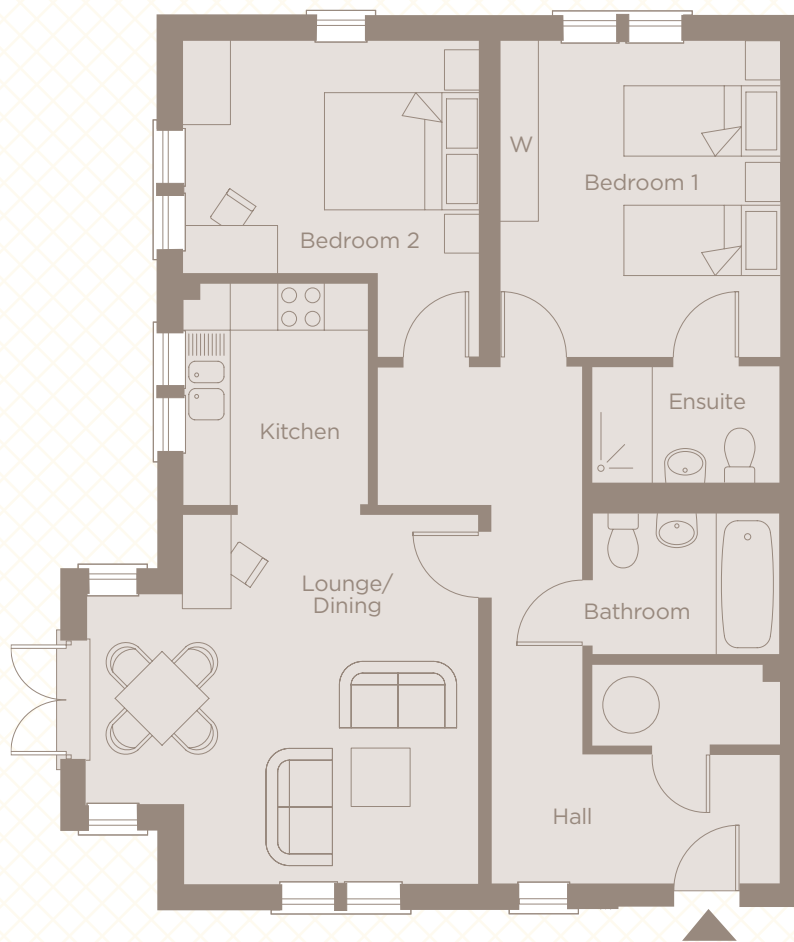
# TATTON

## Apartment 22 2 Bedroom, Ground Floor



ENTERPRISE  
RETIREMENT  
LIVING

BOUGHTON  
HALL



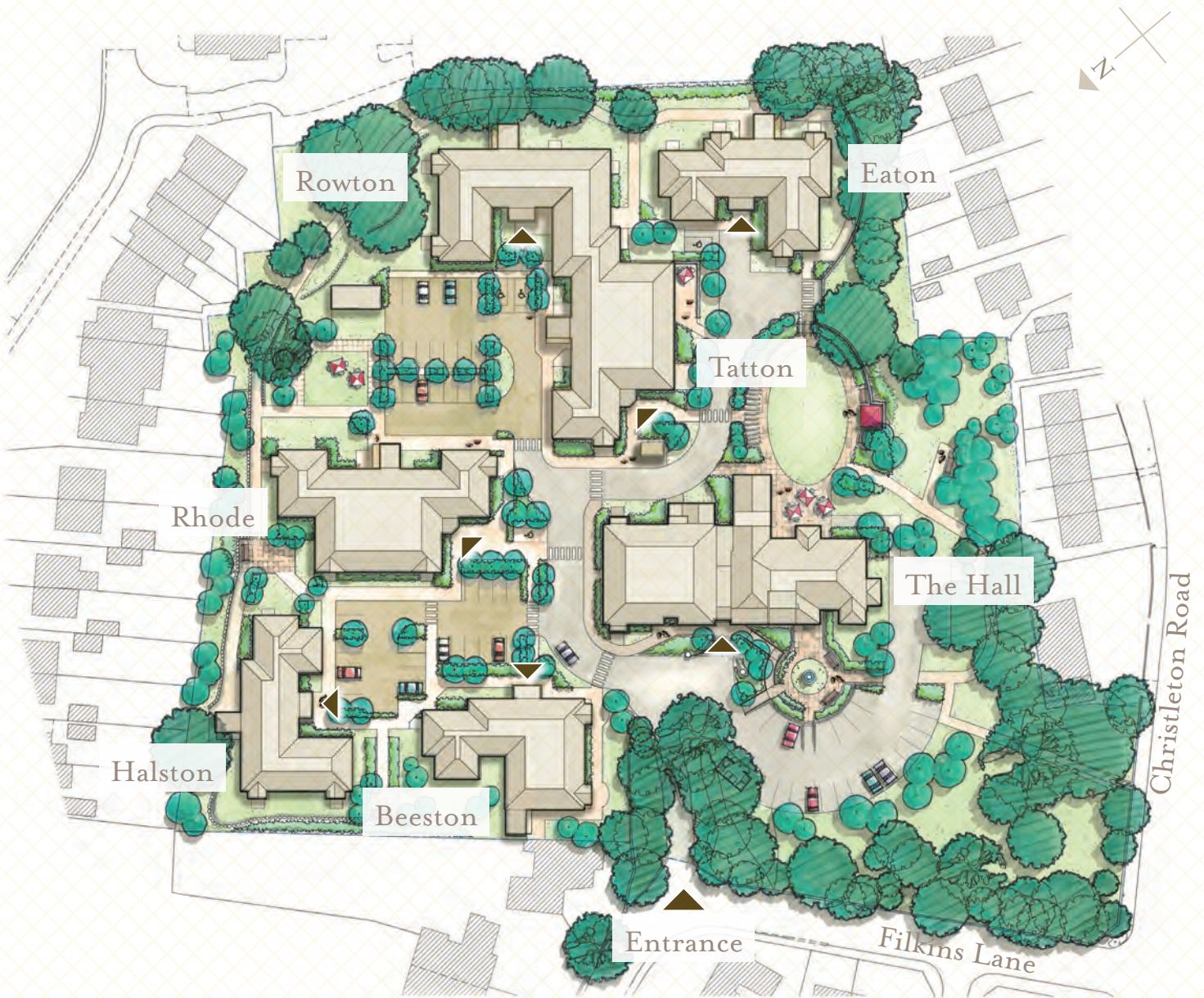
Kitchen	2.86m x 2.36m	9' 5" x 7' 9"
Lounge/Dining	4.75m x 5.04m	15' 7" x 16' 6"
Bedroom 1	4.07m x 3.72m	13' 4" x 12' 2"
Bedroom 2	4.07m x 3.80m	13' 4" x 12' 6"
<b>Approx gross internal area</b>	<b>82 m<sup>2</sup></b>	<b>880 ft<sup>2</sup></b>

Whilst we try to be as accurate as possible, room dimensions are maximum and indicative. Layouts are not shown to scale and have been 'handed' in some cases for illustration purposes. Note: All ground floor apartments have patio doors. Plans include indicative furniture layouts and for the avoidance of doubt such furniture is not included within the specification.

# SITE PLAN

ENTERPRISE  
RETIREMENT  
LIVING

BOUGHTON  
HALL



Whilst we try to be as accurate as possible, room dimensions are maximum and indicative. Layouts are not shown to scale and have been 'handed' in some cases for illustration purposes. Note: All ground floor apartments have patio doors. Plans include indicative furniture layouts and for the avoidance of doubt such furniture is not included within the specification.